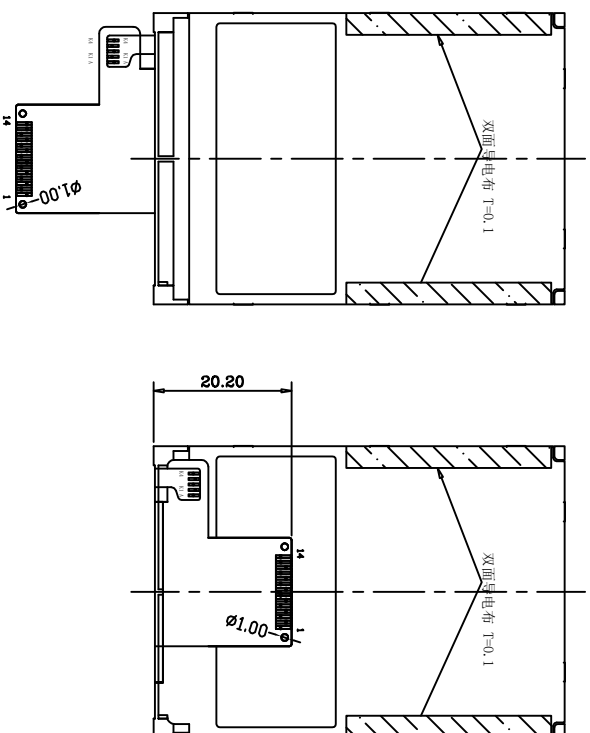
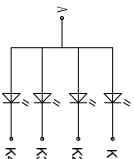


REV	DESCRIPTION	DATE
1.0	First release	20141028



No.:	PIN NAME
1	GND
2	RSTET
3	SCL
4	D/CX
5	CSX
6	SDI
7	SDO
8	GND
9	VCC
10	LEDA
11	LED-K1
12	LED-K2
13	LED-K3
14	LED-K4



背光电路图:

NOTES:

- 1.DISPLAY TYPE: TFT
- 2.VIEWING DIRECTION: 12:00
- 3.LCD DRIVE IC: ST7789V
- 4.POLARIZER MODE: TRANSMISSIVE/POSITIVE
- 5.VCC:2.8V
- 6.BACKLIGHT:4-CHIP WHITE LED PARALLEL
- 7.OPERATING TEMP: -20°C~+70°C
- 8.STORAGE TEMP: -30°C~+80°C
- 9.UNMARKER TOLERANCE: ±0.20

REVISION RECORD		DATE	深圳市尚视界科技有限公司			
①			TITLE: ASM OUTLINE		P/N :	
②			FILE NAME : TM024HDH26		Ver. : V02	SCALE : N.T.S.
③			DRAWN BY	LINJIANFU	DATE	2016.10.20
④			CHECKED BY	LIANGYUQU	DATE	2016.10.20
⑤			APPROVED BY		DATE	
⑥						SHEET : 1/1